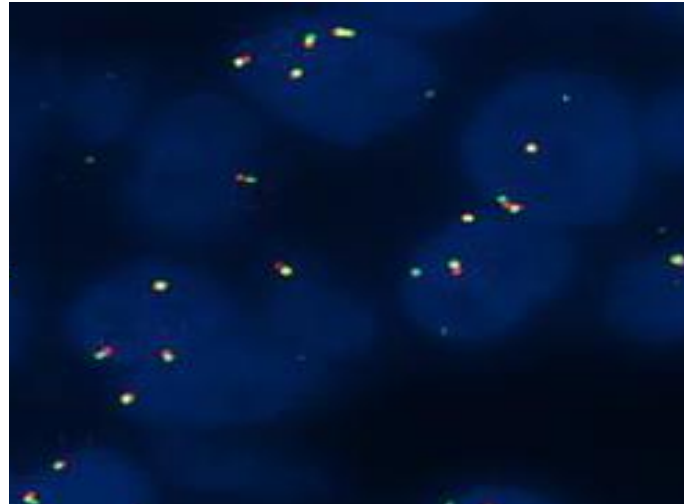
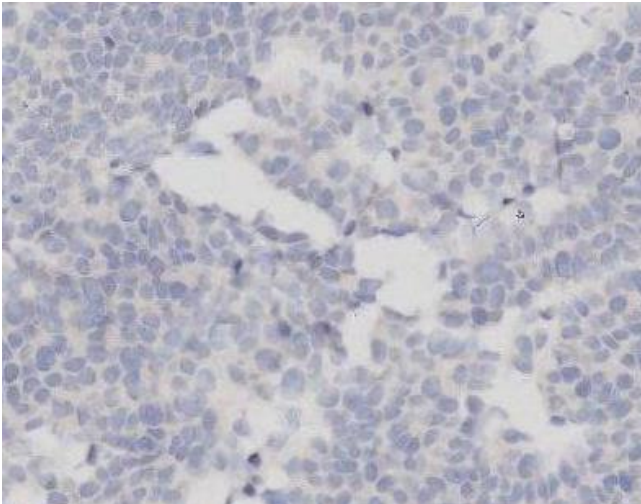
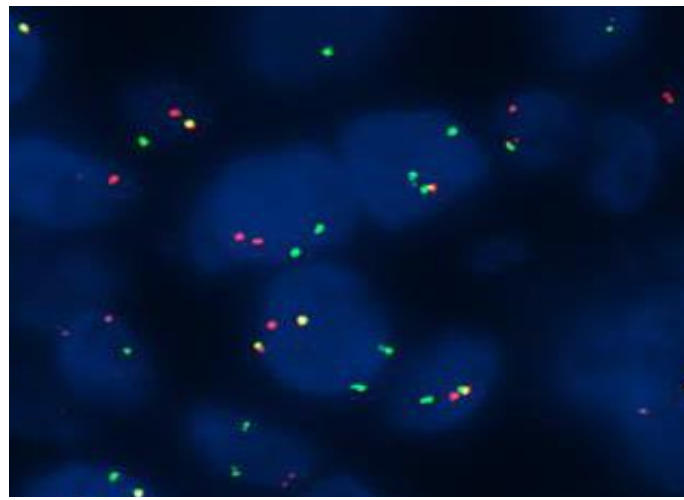
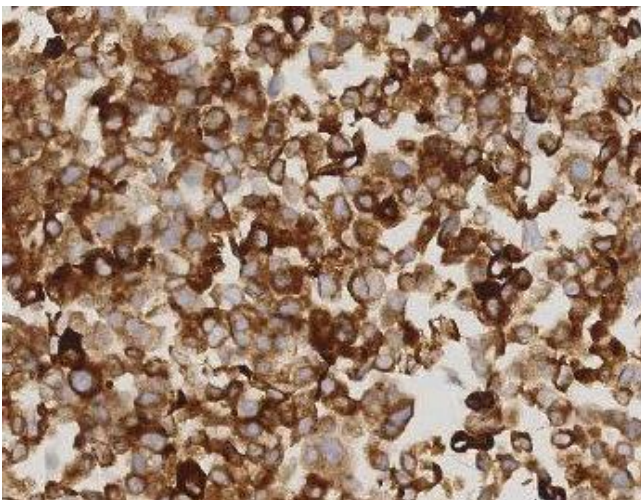


ROS1 Analyte Control for IHC and ISH

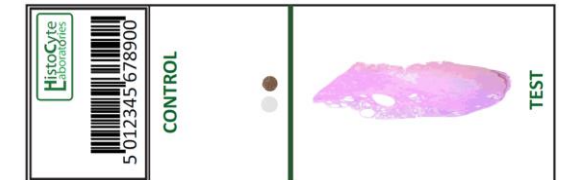
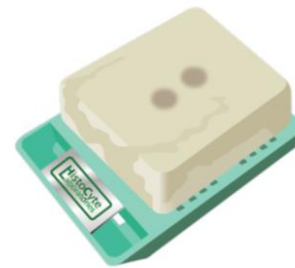
Negative



Positive



Product Name	Format	Code
ROS1 Analyte Control (Two cores positive and negative for ROS1 translocation)	Slide(2)	HCL022
	Slide(5)	HCL023
	Block	HCL024



IHC: CST clone D4D6 on the BenchMark Ultra with UltraView detection.

FISH SureFISH ROS1 Dako/Agilent.



Quality in Control